

DISTRIBUTION REQUIREMENTS PLANNING

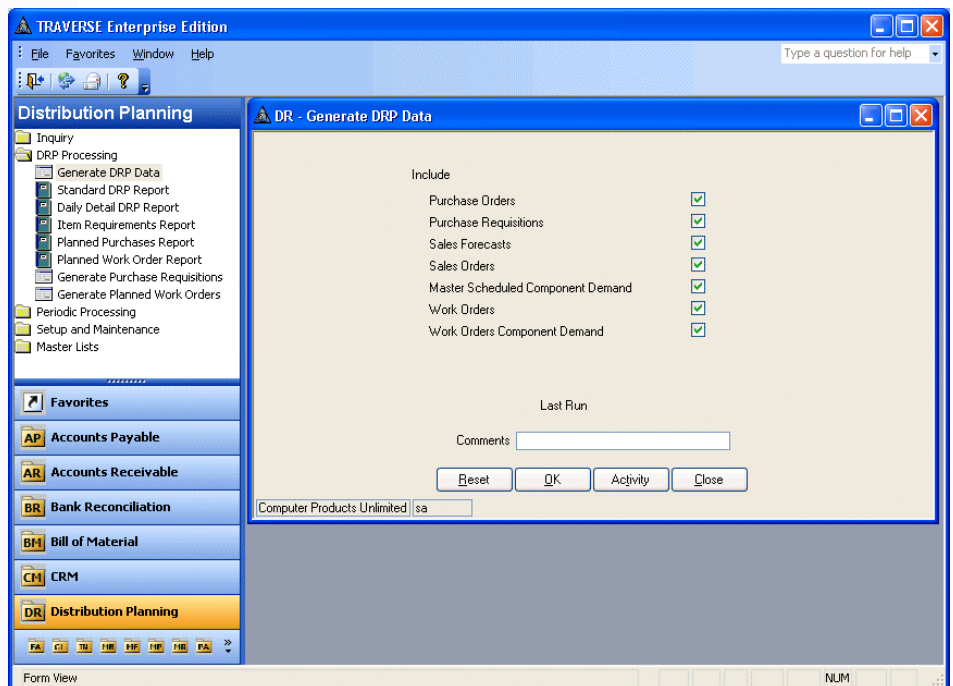
A true planning tool that gives you the information you need to solve tomorrow's problems ... today

Most inventory problems would be a lot easier to solve if you could only see them coming. Distribution planning involves managing sales forecasts, creating master schedules, and running DRP. In short, balancing future supply and demand. TRAVERSE Distribution Requirements Planning enables you to plan for the future. You'll be able to meet market demand and address your company's sales plan.

With TRAVERSE Distribution Requirements Planning, you can determine the items you need and when you need to purchase them in order to fulfill the sales goals set forth in your forecasts.

At the heart of the system is the DRP report, a time-phased glimpse of the future demand for inventory items. Combining the best of both worlds, this report features two formats for users: one for those who prefer bucketless reporting and one for those who prefer the standard DRP report based on daily, weekly, or monthly summaries.

Forecasting can be a challenge, but the TRAVERSE software tools make the job easier than ever. Forecasts can be automatically created for individual items based on current history using multiple methodologies. Forecast flexibility is built in at every step of the process.



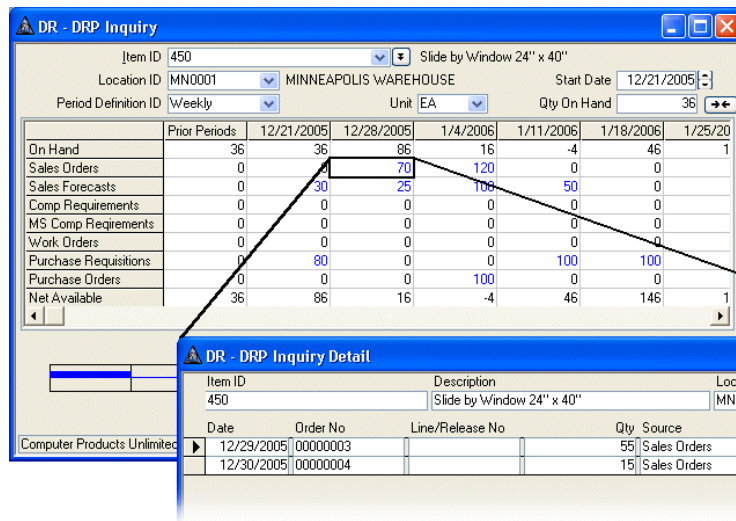
The Distribution Requirements Planning module helps you balance future supply and demand.

Distribution Planning Features:

- DRP Inquiry with grid, graphical, and detail drilldown
- bucketless or user-definable buckets provided
- lead time management
- component pegging
- automatic purchase requisition generation
- sales forecast regeneration
- master schedule maintenance
- optional interface to BOM/Kitting

Distribution Planning Reports:

- Standard DRP Report
- Daily Detail DRP Report
- Item Requirements Report
- Planned Purchases Report
- Sales Forecasts List
- Master Schedule Report
- Master Schedule List



The DRP Inquiry function provides a standard, bucketed, grid view with the ability to drill down to view requirement details.

The Inquiry function also provides a graphical view that uses user-defined colors to show availability in relation to safety stock levels.

