

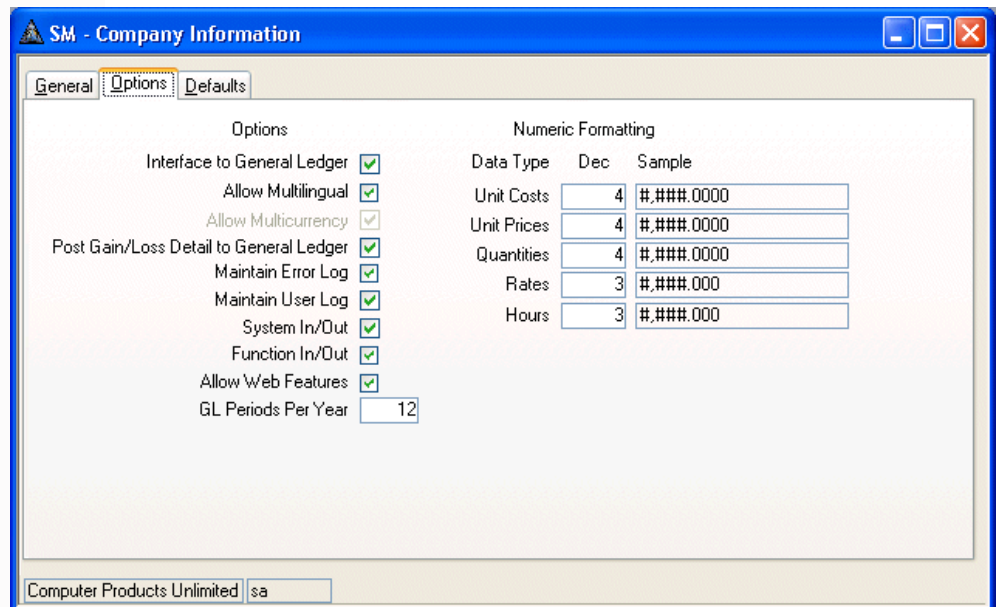
## SYSTEM MANAGER

***Flexibility, customization, and a full complement of tools***

TRAVERSE gives you the tools you're already familiar with and provides a seamless interface to Microsoft products such as Word, Excel, and Mail as well as HTML language for the Internet. It was developed with Visual Basic™, SQL Server, and Microsoft Access—the most powerful databases available. Access has a simple design philosophy, so it is easy to use for everyone—regardless of the level of expertise. SQL Server integrates with the BackOffice family of products, including Exchange and Internet Information Server.

TRAVERSE runs on Windows 98, Windows 2000, Windows XP, Windows NT® and Windows Server 2003. Source code is available so that you can customize the software to meet your unique needs. System Manager provides features such as multilingual and multicurrency capabilities, and users can choose keyboard navigation, point-and-click navigation, or both. And, it's easy to move and merge information.

TRAVERSE manages your financial information quickly, easily, and effectively. You can do quick sorts on any field in ascending or descending order with just one mouse click. In addition, TRAVERSE provides password protection by application, menu, function, and database objects. You'll also find table-driven international and industry specific language sets and such individual workstation options as keyboard controls, toolbars, and language sets.



**SM - Company Information**

General Options Defaults

**Options**

- Interface to General Ledger ☒
- Allow Multilingual ☒
- Allow Multicurrency ☒
- Post Gain/Loss Detail to General Ledger ☒
- Maintain Error Log ☒
- Maintain User Log ☒
- System In/Out ☒
- Function In/Out ☒
- Allow Web Features ☒
- GL Periods Per Year

**Numeric Formatting**

Data Type	Dec	Sample
Unit Costs	<input type="text" value="4"/>	<input type="text" value="#.###.0000"/>
Unit Prices	<input type="text" value="4"/>	<input type="text" value="#.###.0000"/>
Quantities	<input type="text" value="4"/>	<input type="text" value="#.###.0000"/>
Rates	<input type="text" value="3"/>	<input type="text" value="#.###.000"/>
Hours	<input type="text" value="3"/>	<input type="text" value="#.###.000"/>

Computer Products Unlimited sa

*Quick, easy option and detail setup of information about your company.*

## Additional System Manager Features:

- online help for keyboard commands
- table-driven currency with easy updating of currency exchange rates
- support of multiple companies
- conventional or pull-down menu structures with custom options
- sample data company for training
- company and user ID displayed on every screen
- fast transfer of company information and table structures with the "copy from" feature
- country code formatting
- tracking individual user activities with user log
- referential integrity, which prevents deletion of data used by other tables
- easy to modify with capability to prevent modification
- comprehensive online help
- print to file with rich or normal text, or output to Excel or HTML
- optional report previewing before printing
- "quick search" method for finding fields

## TRAVERSE v10.1 Hardware Requirements:

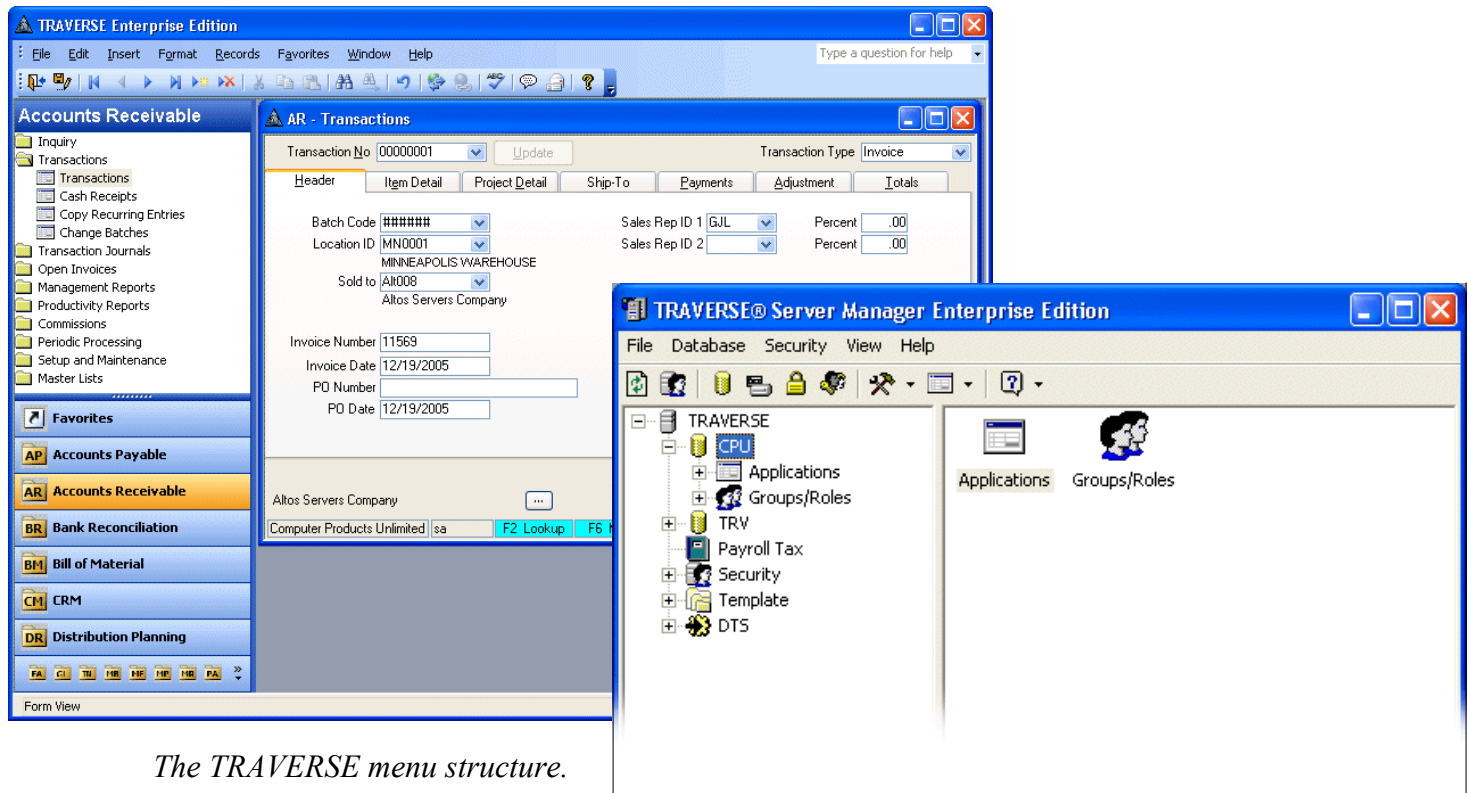
Hardware and software requirements are constantly changing. The requirements listed below are minimum requirements. Open Systems recommends using as fast a processor as possible. Please remember that RAM requirements increase with the number of users. Current hardware and software requirements can also be found on our website at [www.osas.com](http://www.osas.com).

### TRAVERSE Server Manager Business Edition:

- Pentium 450 Mhz (or equivalent)
- 256 MB RAM

### TRAVERSE Server Manager Enterprise Edition:

- Pentium 1 Ghz and 512 MB RAM for the first five users and 128 MB RAM for each additional 10 users.



*The TRAVERSE menu structure.*