

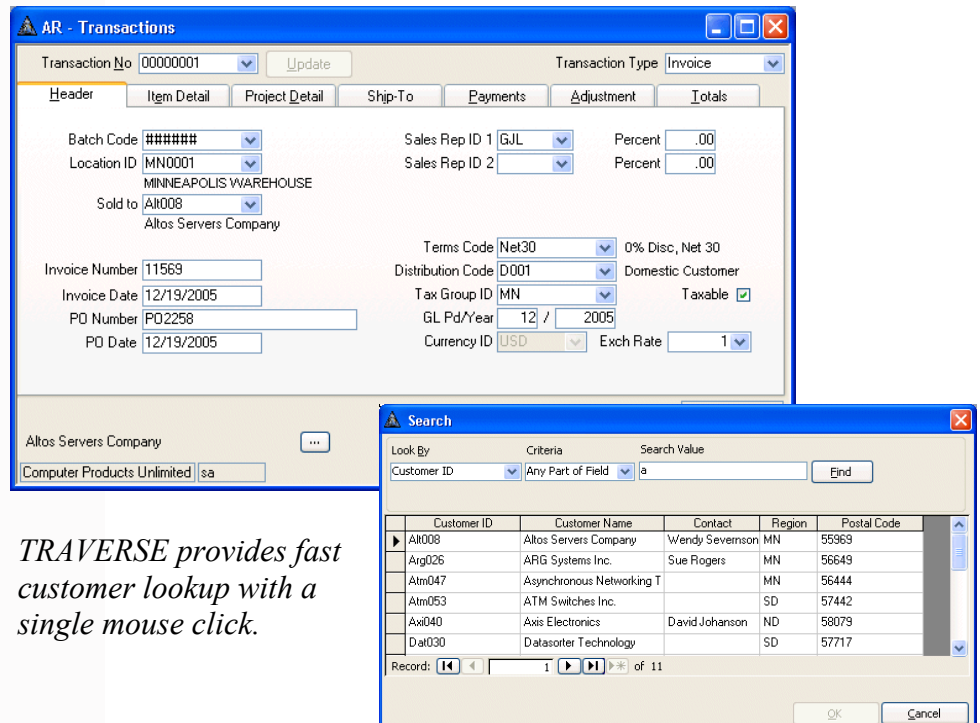
ACCOUNTS RECEIVABLE

Manage your cash, know your customers, analyze performance and trends

TRAVERSE® provides the features you want and the tools you need to run your business more effectively. Source code is available so that you can customize the software to meet your unique needs. TRAVERSE was developed with SQL Server, Microsoft Access® and Visual Basic,™ so the user benefits from a seamless interface to other Microsoft Office products such as Word, Excel, and Mail as well as HTML language for the Internet. Working with the tools you're already familiar with makes training a breeze!

Accounts Receivable offers multilingual and multicurrency capabilities. You can use a mouse and/or a keyboard for navigation and data entry, and you can customize by user which fields to stop at on data entry screens. Historical information for an unlimited number of years can be viewed in detail or summary.

There are other advantages to working with a product developed with Access. Its built-in intelligence senses what you want to do and produces the results you're looking for. Routine tasks become automatic; complex jobs become less complex. TRAVERSE manages your financial information quickly, easily, and effectively.



AR - Transactions

Transaction No: 00000001 Update Transaction Type: Invoice

Header Item Detail Project Detail Ship-To Payments Adjustment Totals

Batch Code: ##### Sales Rep ID 1: GJL Percent: .00
 Location ID: MN0001 Sales Rep ID 2: Percent: .00
 MINNEAPOLIS WAREHOUSE
 Sold to: Alt008
 Altos Servers Company

Invoice Number: 11563 Terms Code: Net30 0% Disc, Net 30
 Invoice Date: 12/19/2005 Distribution Code: D001 Domestic Customer
 PO Number: P02258 Tax Group ID: MN Taxable ☒
 PO Date: 12/19/2005 GL Pd/Year: 12 / 2005
 Currency ID: USD Exch Rate: 1

Altos Servers Company ...
 Computer Products Unlimited sa

Search

Look By: Customer ID Criteria: Any Part of Field Search Value: a Find

Customer ID	Customer Name	Contact	Region	Postal Code
Alt008	Altos Servers Company	Wendy Severson	MN	55369
Arg026	ARG Systems Inc.	Sue Rogers	MN	56649
Atm047	Asynchronous Networking T		MN	56444
Atm053	ATM Switches Inc.		SD	57442
Axi040	Axis Electronics	David Johanson	ND	58079
Dat030	Datascor Technology		SD	57717

Record: 1 of 11

OK Cancel

TRAVERSE provides fast customer lookup with a single mouse click.

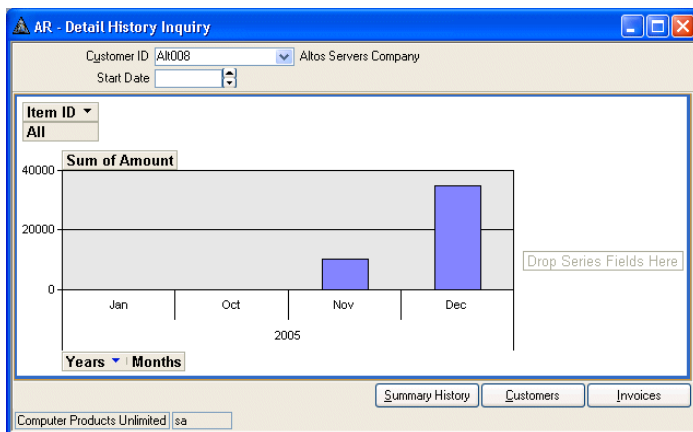
Additional Accounts Receivable Features:

- time-saving batch processing capability
- user-definable aging periods
- full-featured tax reporting, including GST/PST
- commissions payable on booked or paid invoices
- two-way split commissions
- ability to reapply payments and credits to specific invoices
- user-defined invoice and dunning messages
- quick lookup based on customer or transaction
- invoice entry, editing, and viewing from a single screen
- online invoicing (prints invoice after order verification)
- plain paper or preprinted invoice formats
- finance charge tracking
- multiple tax locations per tax group
- post transactions to multiple years
- reprint the last posting activity with comments
- reprint invoices from history including lotted and serialized detail

- customer comments fields
- referential integrity, preventing deletion of data used by other tables
- easy to modify with capability to prevent modification
- drill down for greater detail
- comprehensive online help
- print to file with rich or normal text, or output to Excel or HTML
- optional report previewing before printing
- "quick search" method for finding data or information

Accounts Receivable Reports:

Aged Trial Balance Report
 Cash Flow Report
 Cash Receipts Journal
 Customer Activity Report
 Deposits Journal
 Detail History Report
 Miscellaneous Credits Journal
 Open Invoice Report
 Sales Analysis Report
 Sales Journal
 Sales Tax Report



The screenshots show two windows from the TRVERSE software. The top window, 'AR - Sales Reps', displays information for sales representative Gregg Joseph Lukeski, including his name, address, city, region, country, postal code, phone, fax, employee ID, email, and internet address. It also shows commission settings like Run Code, Commission %, and Percent Of. The bottom window, 'AR - Commission Detail', provides a detailed breakdown of commissions for the same representative, including default criteria, default pay on, and a table of commission details with columns for Customer ID, Invoice Number, Invoice Date, Commission %, and various sales and commission amounts.

You can track commissions by sales representatives with just a click.